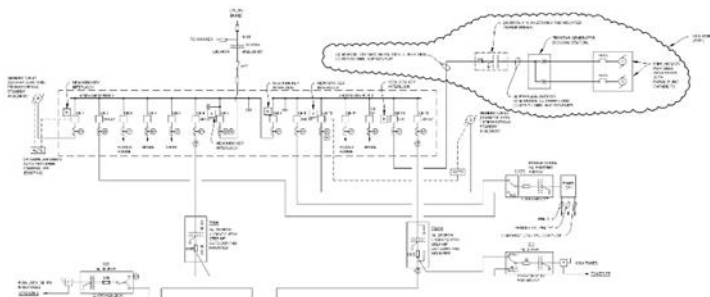
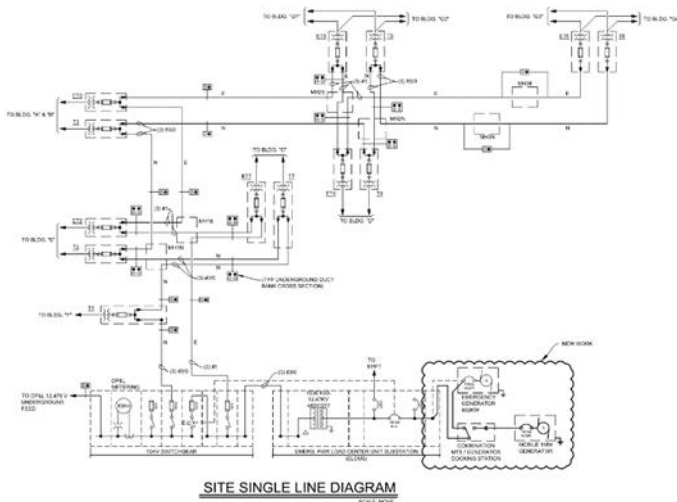
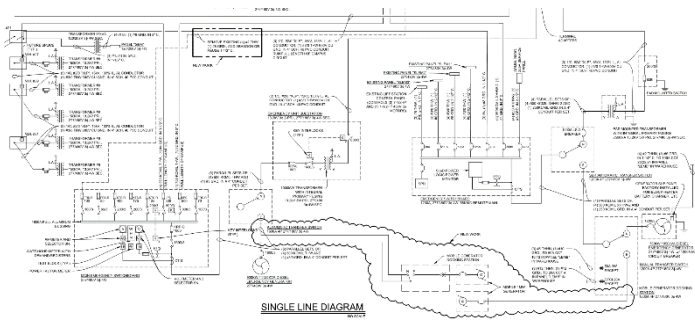


ODRC Statewide Emergency Power Hookups

Multiple Campus Locations

Construction Completion: 2018
Construction Cost: \$1,330,000
Tri-Tech Services: Electrical Engineering
Reference: Tony Shaffer

richard.shaffer@odrc.state.oh.us



Project Description

The Ohio Department of Rehabilitation and Corrections, to improve the emergency power capabilities at their institutions, is establishing Emergency Response Teams (ERTs). Part of the ERTs' responsibilities will be to provide emergency power to ODRC facilities when local emergency power generation fails. Though each facility has different electrical service and emergency power configuration, ampacity, and voltage, a consistent process for deploying mobile emergency generators to each facility needed to be developed.

Tri-Tech, in coordination with Whalen Electric as its design-build partner, is developing the standard equipment design that will be installed by Whalen Electric at an initial group of 7 corrections facilities around the state. The approach includes the use of permanent docking stations to allow for the quick and safe color-coded cabling of the 480V mobile generators to each facility's emergency distribution system and appropriate signage for safety and an extensive training program for their staff. Step-up transformers are provided where the emergency power needs to be medium voltage and new manual transfer switches and modifications to existing switchgear are provided as appropriate to each facility. The new mobile generators will be 480V, 1MW machines with integral diesel fuel tanks and will be capable of paralleling with other ERT machines on sites to provide adequate power for sites that require more than 1 MW of power.

Project Team Members
 Dan Frye