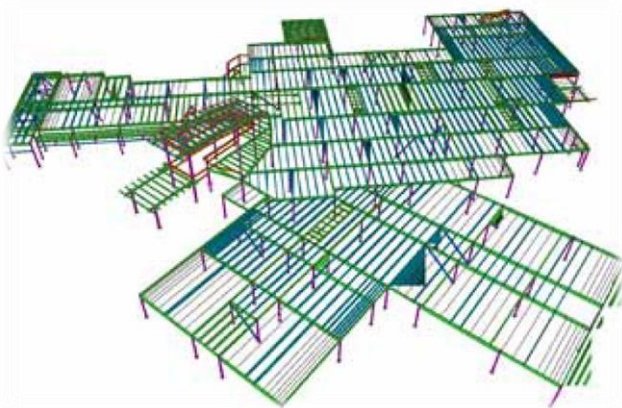
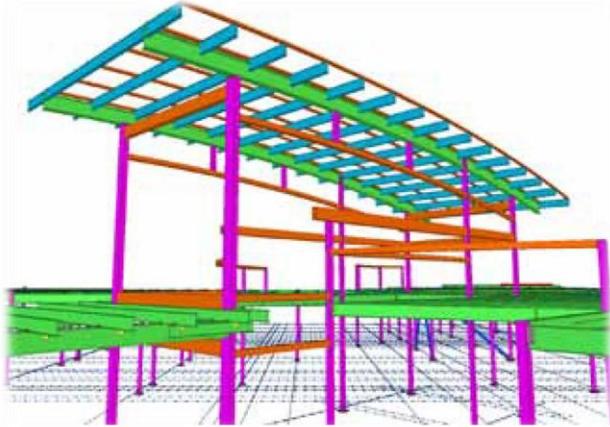


Mendota Community Hospital

Mendota, IL

Construction Completion: 2009
Size: 107,000 SF
Tri-Tech Services: Structural Engineering
and Detailing



Project Description

Mendota Community Hospital is a Critical Access Hospital and an acute care non-profit organization whose mission is to work for the health and well-being of the citizens of the area through a broad range of high-quality, efficient health services.

The 107,000 sf facility was built to replace the previous facility which had originally been built in 1951. Hospital services at the 25-bed facility include an Emergency Department, Intensive Care Unit, Surgery, Lab, diagnostic imaging, cardiopulmonary, and specialty outpatient clinics.

For this project, Tri-Tech partnered with Butler Manufacturing to provide structural engineering design for the facility, which included nonaligned steel framing, chevron type bracing and masonry above a precast wainscot, as well as radius walls and arched roof entry.

The structural steel design was accomplished using Building Information Modeling (BIM) technology, which allowed for enhanced coordination and enabled the project to be completed early and under budget. Tri-Tech worked with Butler Manufacturing to provide integrated structural design and detailing.